

Flat 1, 1 Albany Road, Chorlton, Manchester, M21 0AY



JP&Brimelow
ESTATE AGENTS

Offers In The Region Of £260,000

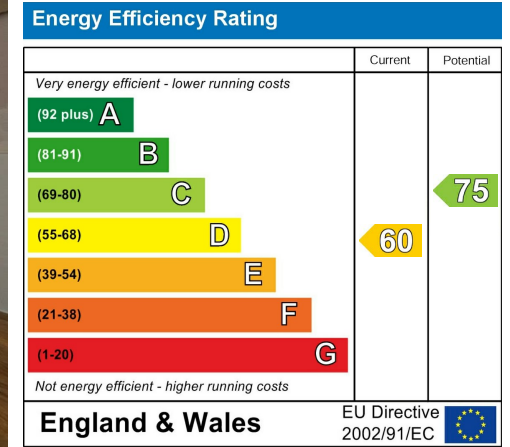


VIDEO TOUR AVAILABLE A spacious and delightful, TWO DOUBLE BEDROOM, duplex apartment set within this period conversion on Albany Road in central Chorlton. The apartment is situated close to local vibrant shops, bars and restaurants on Wilbraham Road and Barlow Moor Road and boasts excellent transport connections. Conveniently located just a one-minute walk from the Metrolink station and Morrisons supermarket. The well-planned accommodation consists of; a communal entrance hallway, a private entrance hall, an open plan lounge/kitchen with a bay window to the front aspect and a double bedroom completing the ground floor. To the lower ground floor there is a further double bedroom benefitting from a walk-in wardrobe, a modern white three-piece bathroom suite and two useful storage cupboards complete this fabulous apartment. The apartment benefits from gas fired central heating, an intercom system and a private garden to the front. OFFERED WITH NO VENDOR CHAIN.



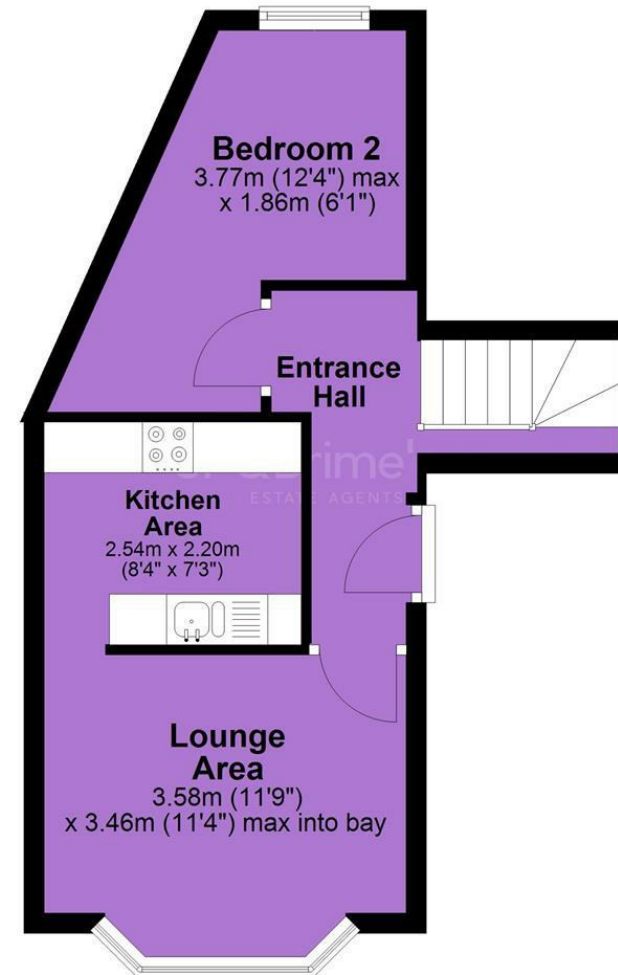


EPC Chart

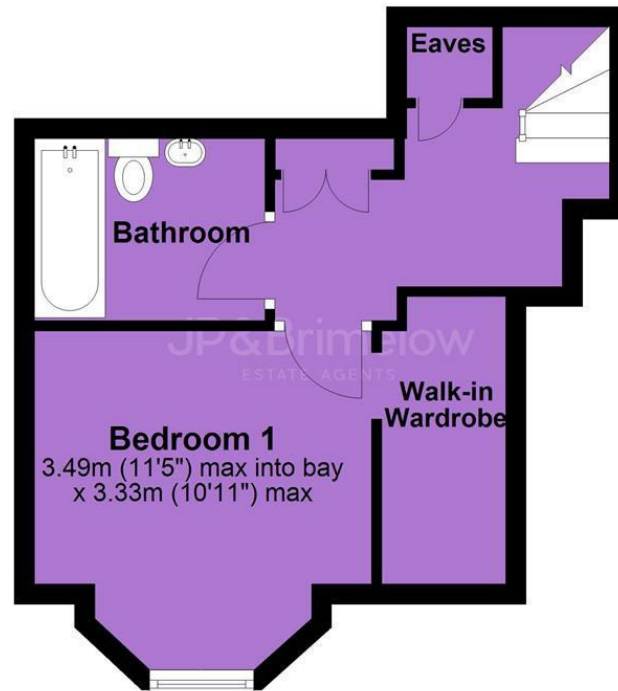


Tenure: **Leasehold** Council Tax Band: **A**

Ground Floor



Basement



JP & Brimelow Estate Agents Ltd
430 Barlow Moor Road, Manchester, M21 8AD
Tel: 0161 8822233
E: sales@jpbrimelow.co.uk www.jpandbrimelow.co.uk



JP & Brimelow
ESTATE AGENTS

NOTICE: JP & Brimelow Estate Agents Ltd for themselves and for the vendors or lessors of this property whose agents they are give notice that:

- (i) the particulars are set out as a general outline only for the guidance of intending purchasers or lessees, and do not constitute, nor constitute part of, an offer or contract;
- (ii) all descriptions, dimensions, references to the condition and necessary permissions for use and occupation, and other details are given in good faith and are believed to be correct but any intending purchasers or tenants should not rely on them as statements or representations of fact but must satisfy themselves by inspection or otherwise as to the correctness of each of them;
- (iii) no person in the employment of JP & Brimelow Estate Agents Ltd has any authority to make or give any representation or warranty whatever in relation to this property.

jpandbrimelowstateagents

@jpandbrimelow